



India Meteorological Department
(Ministry of Earth Sciences)

NATIONAL BULLETIN NO. 18

TIME OF ISSUE:2030 HOURS IST

DATED: 02.02.2023

FROM: INDIA METEOROLOGICAL DEPARTMENT (FAX NO. 24643965/24699216/24623220)

TO: CONTROL ROOM, NDM, MINISTRY OF HOME AFFAIRS (FAX.NO. 23093750)

CONTROL ROOM NDMA (FAX.NO. 26701729)

CABINET SECRETARIAT (FAX.NO.23012284, 23018638)

PS TO HON'BLE MINISTER FOR S & T AND EARTH SCIENCES (FAX NO.23316745)

SECRETARY, MOES (FAX NO. 24629777)

H.Q. (INTEGRATED DEFENCE STAFF AND CDS) (FAX NO. 23005137/23005147)

DIRECTOR GENERAL, DOORDARSHAN (23385843)

DIRECTOR GENERAL, AIR (23421105, 23421219)

PIB MOES (FAX NO. 23389042)

UNI (FAX NO. 23355841)

D.G. NATIONAL DISASTER RESPONSE FORCE (NDRF) (FAX NO. 26105912, 2436 3260)

DIRECTOR, PUNCTUALITY, INDIAN RAILWAYS (FAX NO. 23388503)

CHIEF SECRETARY, ANDAMAN & NICOBAR ISLANDS (FAX NO. 03192- 232656)

CHIEF SECRETARY, GOVT. OF TAMIL NADU (FAX NO. 044-25672304)

CHIEF SECRETARY, GOVT. OF PUDUCHERRY (FAX NO. 0413-2337575, 2334145)

CHIEF SECRETARY, GOVT. OF KERALA (FAX NO. 0471-232716)

Sub: Depression over south Sri Lanka

The Depression over south Sri Lanka moved southwestwards with a speed of 13 kmph and lay centered at 1730 hours IST of today, the 2nd February over the same region near latitude 6.3°N and longitude 80.3°E, about 30 km north-northeast of Galle (Sri Lanka), 80 km south-southeast of Colombo (Sri Lanka).

It is very likely to continue to move southwestwards across south Sri Lanka, weaken gradually and emerge into Comorin and adjoining Gulf of Mannar off west coast of Sri Lanka as a well marked low pressure area around midnight of today, the 02nd February 2023.

Forecast track and intensity are given below:

Date/Time(IST)	Position (Lat. °N/ long. °E)	Maximum sustained surface wind speed (Kmph)	Category of cyclonic disturbance
02.02.23/1730	6.3/80.3	35-45 gusting to 55	Depression
02.02.23/2330	5.8/79.8	30-40 gusting to 50	Well Marked Low Pressure Area

Warnings:

(i) Rainfall (warning graphics enclosed)

- ❖ Light/moderate rainfall is very likely at many places over Tamil Nadu & Puducherry and Kerala with isolated **heavy rainfall** over south Tamil Nadu and Kerala on 2nd February.

(ii) Wind warning:

❖ **Southwest Bay of Bengal:**

- Squally wind with speed reaching 35-45 kmph gusting to 55 kmph on 2nd February.

❖ **Along & off Sri Lanka coast:**

- Squally wind with speed reaching 35-45 kmph gusting to 55 kmph on 2nd February becoming squally weather with wind speed reaching 30-40 kmph gusting to 50 kmph on 3rd February.

❖ **Comorin area and Gulf of Mannar along & off south Tamil Nadu & Karaikal coasts:**

- Squally wind speed reaching 35-45 kmph gusting to 55 kmph on 2nd February becoming squally weather with wind speed reaching 30-40 kmph gusting to 50 kmph on 3rd February.

❖ **Along & off north Tamil Nadu & Puducherry coasts:**

- Strong wind speed reaching 30-40 kmph gusting to 50 kmph on 2nd February.

(iii) Sea condition

❖ **Sea condition is likely to be rough to very rough**

- Southwest Bay of Bengal and along & off Sri Lanka coast on 2nd February.
- Comorin area and Gulf of Mannar along & off south Tamil Nadu coast on 2nd February

❖ **Sea condition is likely to be moderate to rough**

- Along and off north Tamil Nadu & Puducherry coasts on 2nd February.
- Comorin area and adjoining southwest Bay of Bengal along & off south Sri Lanka coast on 3rd February

(iv) Fishermen Warning (warning graphics enclosed)

Fishermen are advised not to venture into:

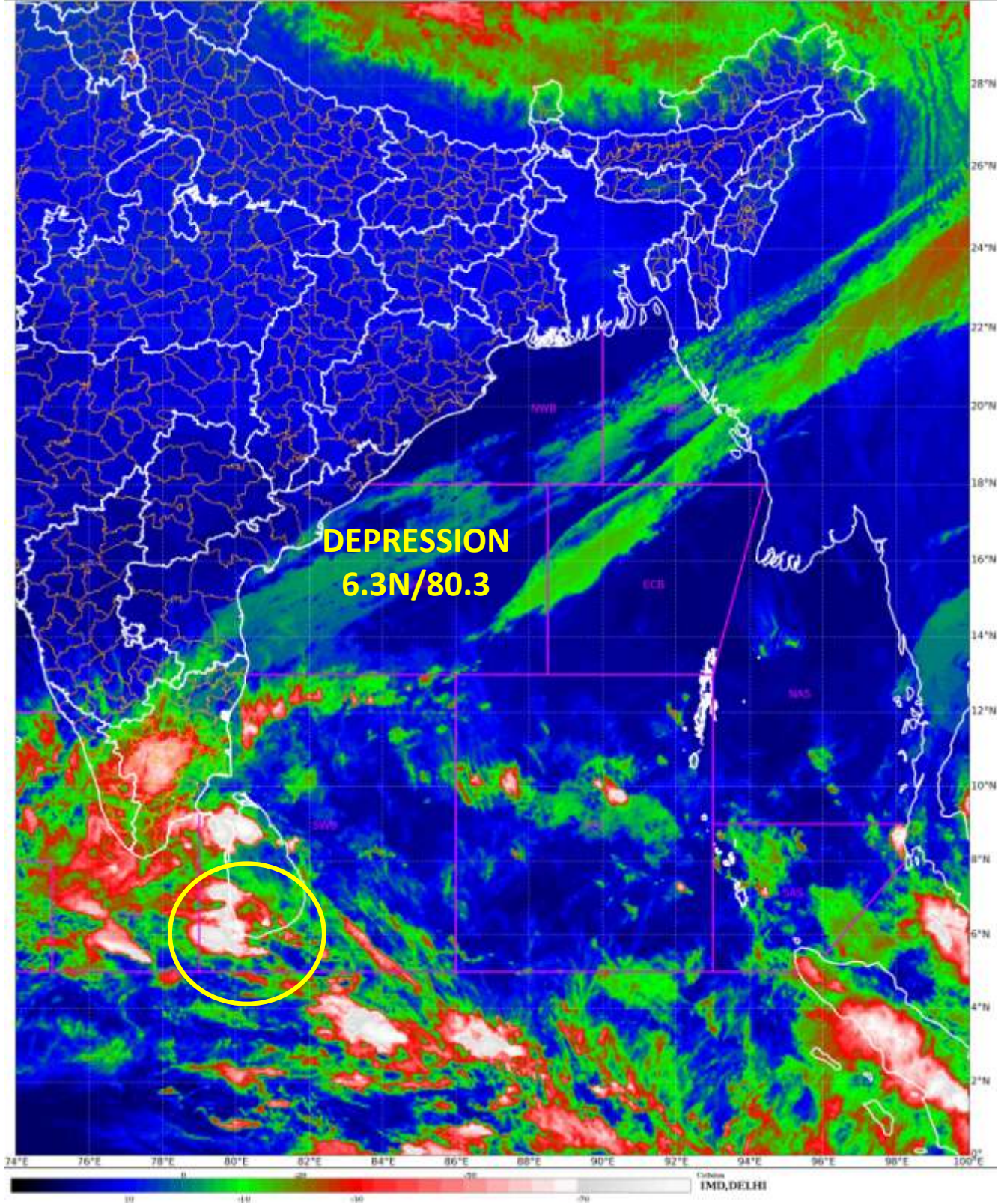
- ❖ Comorin Area and adjoining Gulf of Mannar and Southwest Bay of Bengal along & off Sri Lanka and south Tamil Nadu & Karaikal coasts on 2nd February.
- ❖ Comorin Area and adjoining Southwest Bay of Bengal and along & off Sri Lanka coast upto 3rd February.

The system is under continuous surveillance and the next message will be issued at 0230 hours IST of tomorrow, the 3rd February, 2023.

(Ananda Kumar Das)
Scientist F, Cyclone Warning Division, New Delhi

Copy to: ACWC Kolkata/ ACWC Chennai/ CWC Bhubaneswar/CWC Visakhapatnam/MO Port Blair

LEGEND: Heavy Rainfall: 64.5 to 115.5mm, **Very Heavy Rainfall:** 115.6 to 204.4mm **Most Places:** more than 76% of total stations, **Isolated Places:** Less than 25% of total





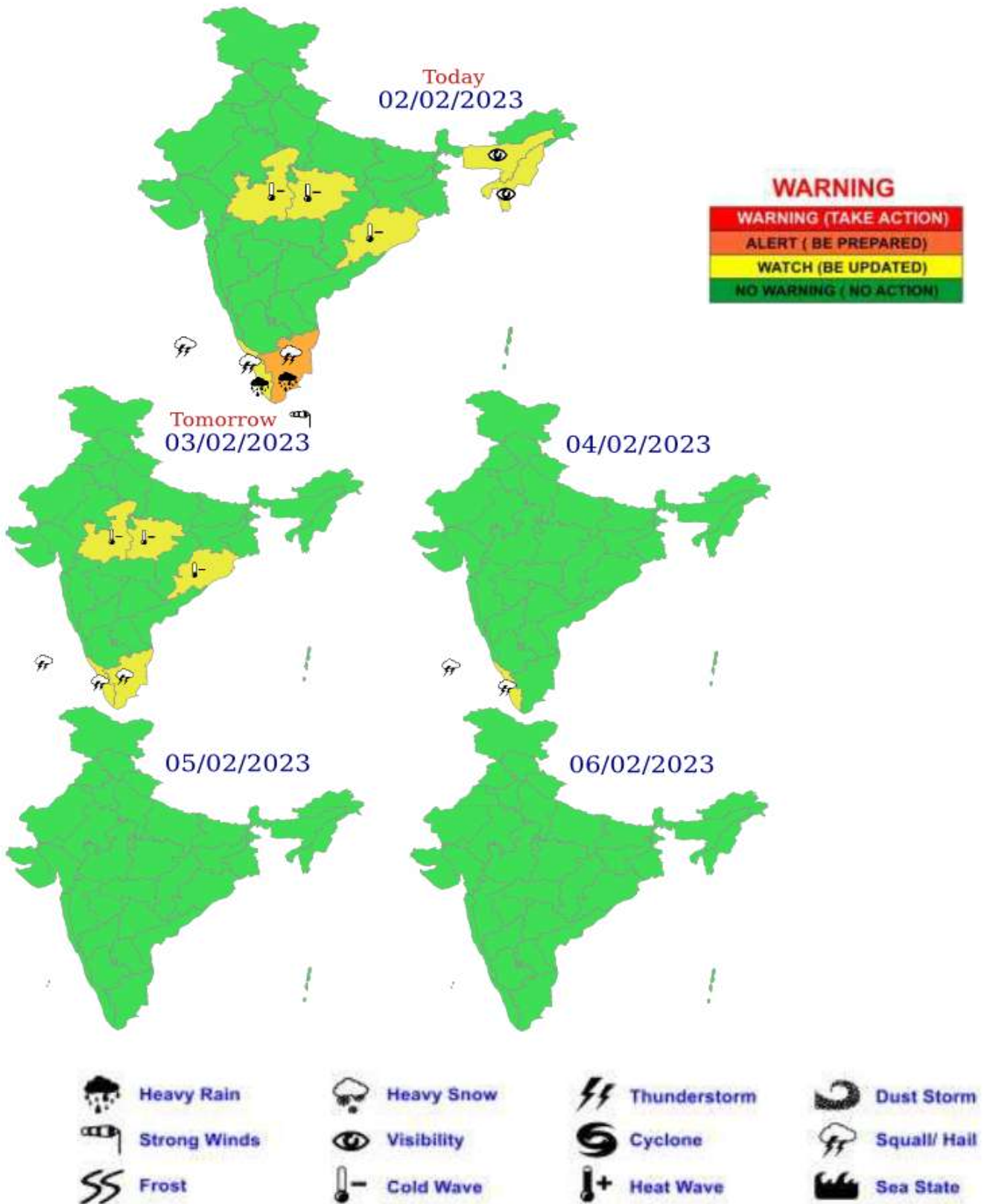
OBSERVED AND FORECAST TRACK OF DEPRESSION OVER SOUTH SRI LANKA BASED ON 1200 UTC OF 2ND FEBRUARY, 2023.



DATE/TIME IN UTC
IST=UTC + 0530
L: LOW PRESSURE AREA
WML: WELL MARKED LOW PRESSURE AREA
D: DEPRESSION (17-27 KT)
DD: DEEP DEPRESSION (28-33 KT)
CS: CYCLONIC STORM (34-47 KT)
SCS: SEVERE CYCLONIC STORM (48-63KT)
VSCS: VERY SEVERE CYCLONIC STORM (64-89 KT)
ESCS: EXTREMELY SEVERE CYCLONIC STORM (90-119 KT)
SuCS: SUPER CYCLONIC STORM (\geq 120 KT)

- LESS THAN 34 KT
- 34-47 KT
- \geq 48 KT
- OBSERVED TRACK
- FORECAST TRACK
- CONE OF UNCERTAINTY

Multi hazard Warning Graphics



Fishermen warning graphics



Squally WX with wind speed 40-45 kmph gusting to 55 kmph

Squally wind speed 40-50 kmph gusting to 65 kmph

Fishermen are advised not to venture into the marked areas.